

The Healing House Feasibility Study

Virtual Charette April 5-7, 2022

022032.00



THE HEALING HOUSE

Table of Contents

3	1. TEAM INTRODUCTION <ul style="list-style-type: none">a. Participantsb. DSGW/KA
4	2. CHARETTE AGENDA AND SCHEDULE
5	3. EXECUTIVE SUMMARY
6-14	4. GUIDING PRINCIPLES <ul style="list-style-type: none">a. Programs and Activitiesb. Home Essencec. Sustainability and Subsistenced. Culture<ul style="list-style-type: none">i. Orid Worksheet
15-17	5. ROOM ALLOCATION TABLE (PROGRAMMING)
18-20	7. OPTIONS
21-22	8. SITE PLAN
23-29	9. BUILDING FLOOR PLAN
30	10. COST ESTIMATE
31	11. EXTERIOR RENDERINGS
32-57	12. APPENDIX <ul style="list-style-type: none">a. Media Articlesb. Charette Conclusion Presentation

Team Introduction

Participants

Native American justice involved women charette process participants: **Cheryl Kangas, Tiffany Kingbird, Nicole Lussier, Kari Cook, Leah Fairbanks, Jorel Martell, Adrianna Norris, Samantha Zornes, Daniell Goodman, Kymberly Hare, Katie Brothers of all, Jennifer Larmorie, Kristin Cox**

Martin Jennings, Executive Director, **Natasha Kingbird**, Ombishkaa Lead Coordinator, and the Ombishkaa Re-entry staff and Recovery Corps Navigators from Northwest Indian Community Development Center

Nikki Engel, Policy & Legal Systems Program Manager from Violence Free Minnesota

Linda Thompson, Director of Operations from Minnesota Indian Women's Sexual Assault Coalition

Liz Richards, Director of Victim Services & Restorative Justice, & **Kate Erickson**, Community Stability Program Director from Minnesota Department of Corrections

Architects and Cost Estimator

Rebecca Lewis, Architect/Director of Healthcare Design at DSGW Architects, Inc.

Mike Laverdure, Managing Principal Architect at DSGW Architects, Inc.

Steven Trudeau, Senior Project Manager at Kraus Anderson Construction Company

Funding for the Feasibility Study provided by the Minnesota Department of Corrections



AGENDA

project Healing House Feasibility Study
project # 022032.00
date 04/05/2022 - 04/07/2022
subject Healing House Virtual Charette
from Rebecca Lewis DSGW Architects, Inc.
Michael Laverdure DSGW Architects, Inc.
to Liz Richards Director, Victim Services & Restorative Justice
Minnesota Department of Corrections
cc

Tuesday, April 5

9:00 - 9:30 Opening, Welcome and Introductions
9:30 - 9:45 Review Charette Agenda and goals
9:45 - 10:00 Break
10:00 - 12:00 Guiding Principles (Cultural, Programs and Activities, Home Essence, Sustainable)
12:00 - 1:00 Lunch
1:00 - 2:00 Guiding Principles (Cultural, Programs and Activities, Home Essence, Sustainable)
2:00 - 2:30 Prioritizing Guiding Principles
2:30 - 3:00 Introduction Site Evaluation
3:00 - 3:15 Break
3:15 - 4:00 Group Criteria for Site Evaluation Establishment
4:00 - 5:00 Site criteria ranking
5:00 - 5:10 Closing

Wednesday, April 6

9:00 - 9:15 Opening Welcome
9:15 - 10:00 Programming
10:00 - 10:15 Break
10:15 - 12:00 Programming
12:00 - 1:00 Lunch
1:00 - 3:00 DSGW working session
3:00 - 5:00 DSGW presents site diagrams and building diagram options
5:00 - 5:10 Closing

Thursday, April 7

1:00 - 2:00 Group Presentation
2:00 - 3:00 Open House
3:00 - 3:30 Exterior Discussion
3:30 - 3:45 Closing comments

END OF AGENDA

Executive Summary

RE: The Healing House Feasibility Study
Charette 2022
022032.00

April 5th through the 7th the charette for the Healing House Feasibility Study was hosted by the Northwest Indian Community Development Center in Bemidji, MN, and the Minnesota Department of Corrections, Victim Services and Restorative Justice Division. The charette hosts were Liz Richards, Director of Victim Services and Restorative Justice at the Department of Corrections and Natasha Kingbird, from the Northwest Indian Community Development Center. The design team consisted of DSGW Architects led by Mike Laverdure, AICAE, AIA, NCARB, LEED AP and Rebecca J. Lewis, FAIA, FACHA, CIDMN. The invited participants were Native American justice involved women. Observers to the charette process were staff from Northwest Indian Community Development Center, Violence Free Minnesota, Minnesota Indian Women's Sexual Assault Coalition, and the Minnesota Department of Corrections.

During the charette, participants provided guidance and input to create the foundation of an architectural study of a potential building project of restorative and supportive housing. This housing would be for indigenous women who have experienced justice involvement. The Guiding Principles for the project created the foundation of what was to be considered during the charette. The conversation focused on environment and cultural priorities and the resulting list created the basis for planning. Also, part of the discussion was the site development. A fictitious piece of lakeside property was selected for the study, the determining factor being in a non-urban setting and close to a water source was important. Spaces for outside gathering, spirituality, relaxation, reflection, and activity were proposed and given high priority by the group. Part of the cultural discussion included the possible naming of the project: Noojimoiwewin Endaayan (Healing House). This may want to be vetted by an Ojibwemowiiin language expert, but the group considered the naming connected to the creation of the concept for the project.

The next stages of the charette process included listing of spaces to determine a building size as well as the site amenities supportive of the programs. Then options were discussed and overnight, a plan created representing the discussions, priorities, and goals. This was presented to the group for feedback and a final discussion was held about how the exterior should look so that exterior renderings could be developed.

After the event, a local construction company took the information and created an Opinion of Probable Cost for the project. Secondly, DSGW Architects created exterior renderings representing what we heard, learned and gathered from the charette. All this information, plus notable media coverage is included in this report.

We want to acknowledge the Department of Corrections and the Northwest Indian Community Development Center for supporting this study and especially thank the women who dedicated their time and energy to participating in the charette. The ideas, trust, imagination and thoughtfulness was obvious by the group.

Guiding Principles



A. Programs and Activities

1. Safe Haven

2. Sense of outdoor environment

- a. Sacred garden. Sage. Cedar. Sweet grass. Tobacco. Dogwood, knick-knick
- b. Blueberries, etc. in garden. Anishinaabe
- c. Memorial for people who have died in overdose
- d. Green grass, run hands across the grass
- e. Flowers
- f. River/water, by the side, sight, sound, take it all in
- g. Animals
- h. Relaxing
- i. Somewhere welcoming where you could bring your child
- j. Outdoor place where could enjoy a meal, large table, grill/BBQ
- k. Designated pathway, be able to bring kids/ family on walks
- l. Place for personal reflection, be by themselves. Identify plants along the path, align with culture
- m. Welcoming to family members
- n. Sweat lodge
- o. Fire pit, roast some smores, tell stories, screened in
- p. Tree house for the kids
- q. Garden, place to be outside
- r. Gazebo

- s. Park for the children, playground
- t. Wrap around patio
- u. Garage/shed, to put stuff away like bikes
- v. Big yard
- w. Outdoor activity space like a volleyball court, basketball court
- x. Outdoor smoking area
- y. 3 season porch
- z. Lilac bushes and cedar trees. Birch bark.
- aa. Privacy fence, secure
- ab. Telescope
- ac. KOI pond
- ad. On a lake, near water

3. Interior environment

- a. Childcare, adjacent to kitchen
- b. Rooms on 3rd floor, groups on 2nd, public on bottom
- c. Deck
- d. Round house would be nice
- e. Fireplace
 - Place to gather, chairs, place to be, up to each person on how they would utilize that space, flexible. Open.
- f. Built-in shelving, instead of dressers
- g. Big windows
- h. Playroom for the kids
- i. Big kitchen. Able to involve others in the process. A family could come to visit to cook/ eat a meal. Counter space for family/kids to

continued on next page...

Guiding Principles



A. Programs and Activities

- sit at and eat while you are cooking a meal
- Big kitchen tables
- Island in the kitchen
- A pantry
- Kitchen with some more professional set ups like a three-compartment sink with a sprayer, etc.
- j. Windows to outside, see nature
- k. Den in the basement with a big living room, watch movies, relax, lots of couches, away from kids. Projector screen to watch movies. Theater quality sound. Multiple TV areas.
- l. Traditional room for prayer/smudging, drum
- m. High ceilings
- n. More bathrooms, not sharing bathrooms. Walk-in showers. Jacuzzi. Lots of mirrors. Large bathrooms.
- o. Rooms large enough to fit more than a bed and a dresser. Maybe a chair for private time. Not so confined.
- p. Enough space so that you are not distracted by others doing another activity, place to be reflective
- q. Sewing / Craft room / Traditional crafting like beading, regalia, etc.
- r. Places for art
- s. Library, law library, a place to learn their rights, do research
- t. Greenroom for vegetables
- u. Connection to outdoors
- v. Bedrooms, two rooms share a bathroom.
- w. Big rooms, walk-in closet
- x. Garage
- y. Walls could be decorated by the incarcerated women's artwork. They have a lot of talent. Nice art. Buy artwork from them and put them on the wall.
- z. Place to share, room to gather, do things, have a meeting. This could be a multi-purpose space.
- aa. Nice comfortable chairs and a table
- ab. A pool table
- ac. Area where you have exercise equipment, weights
- ad. Computer area with a printer to look up jobs.
- ae. Classroom.
- af. Skylights to bring in daylight. Bring in the sun during the day.
- ag. Solar panels
- ah. Recycling and compost
- ai. Donation spot for those coming out of prison who don't have anything
- aj. Laundry room, multiple pieces of equipment
- ak. Indoor animals to teach the little ones. Fish tank.

Guiding Principles



B. Home Essence

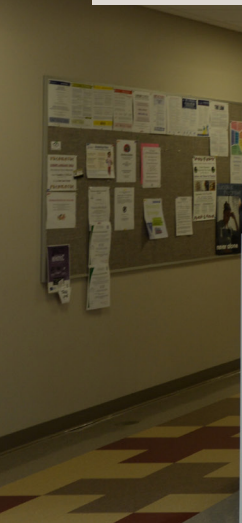
1. Used to having a decent amount of people for support
2. Privacy / Apartments
3. A middle – ground which is shared space, pathways to more private living
4. MG would be kitchen, laundry, living space
5. The spaces to the side would be more private but would still have spaces that are for gathering, like a semi-private living room for families to visit
6. Families are important. Part of the path to healing, etc.
7. Everyone needs a private space, safe space
8. The MG space is where everyone could come together as a family
9. “LODGE”
10. As Indigenous people historically, lived our lives as a group of people. Privacy is good but not when it prevents connection to other people.
11. Sharing bathrooms is ok.
12. Coming together as a community help the healing process.
13. “COMMUNITY”
14. A place that has both private and public spaces. Depends on the person.
15. “FAMILY” “FAMILY”
16. Good to have your own space and privacy but need to be around other people. Helps you heal.
17. “SAFE” “SAFE”
18. Big house. Big yard. Like being around other people.
19. Option for a transition space. For people that like being independent. For transitioning out of the group setting.
20. “ACCEPTANCE”
21. A place to come together. Living together with other women, has a lot of strength / power. When Native American women come out incarceration, they have plans, need someone going through same thing. Support system will help. Apartments may cause issues due to privacy, maybe relapse into past addictions, etc.
22. “FAMILY”
23. Being in a house setting, place to get back on your feet. Not a forever home.
24. “PEACE”
25. “COMFY” “COMFY” “COMFORT”
26. “FRIENDS” “FRIENDS”
27. Two separate housing areas. Don’t like sharing bathrooms. Still promote coming together. Apartments. Dormitory style. Come together in the middle.
28. Not a full apartment. Sleeping area. Bathroom. No kitchen. Unit.
29. 3 stage set up. As they first enter, maybe start at dormitory >>> efficiency apartment >>> family apartment.
30. Log house.
31. “HEART”
32. Childcare area, maybe near the kitchen.



C. Sustainability and Subsistence

1. Less cost is always important for energy planning and respect of our weather. Bills could be kept low.
2. We should plan for a small carbon footprint and make things that last! Built with inclusion of water preservation and efficiency...rainwater collection for garden work.
3. Solar panels may be a good idea; computer monitor so you can see energy consumption? This might be a good idea!
4. Ditto!
5. solar panels and monitor are a good idea.
6. Ditto.
7. Solar panels are useful, composting and recycling, less water use is a good goal.
8. Alternative heating source for the house. Could be geothermal if it is an option.
9. Dual language signage would be a nice cultural response. We could include other languages as well to make everyone welcome!
10. Using signage to help introduce renewable resources their importance and why it's important to us.
11. Day light? Sunshine, direct sun.
12. Indoor air quality, operable windows and lots of fresh air.
13. Ceiling fans that have a UVC lighting and clean the air.
14. Quilting together and individual beading are the chosen shared activities. Teaching and sharing those skills. Storage for art supplies.
15. Quilting is a shared activity and might need access to a quilting long arm machine.
16. Kids will be invited into the arts space to share and teach.
17. Practice dance in a larger shared room.
18. Teaching and craft room should be next to each other.
19. Outdoor space, smart tv to watch videos or other items.
20. Syrup making outside, maybe access to an outdoor kitchen or small area to cook syrup. Diamond willow crafts, painting, flexible space (deep fryer!!!) Mini pow wow space outside?

Guiding Principles



D. Cultural

What do you think of when we saw “culture”?

1. I think of what I was taught, traditionally.
2. Being part of a group of people that share the same values and beliefs. Community is our culture.
3. What I was taught about ceremony and lessons from my family.
4. Medicines (sweet grass, cedar, and tobacco) and pow wows and the circle...people in a circle.
5. Ceremonies, sweat lodge, pow wows, drum and medicine and the healing aspects.
6. Women and men with medicine, sweat lodges, etc.
7. Historical background and agreement with other comments.
8. Sweat lodge and tobacco, big things would be plants that are medicinal and recognition of that.
9. Connection that our people have to each other, and Mother Earth and we thrive off of other power.

A saying or word you have learned about “culture”?

1. “Greetings, never say goodbye!”
2. “Live a good life.”
3. Seven teachings.
4. “Wait”
5. Hello or greeting
6. “No” and “Obey your mom”
7. Love is the first and most important of the seven

teachings. First is to love yourself then you can love others and it is represented by the Eagle.

8. Tell me that I can’t, and I will show you that I can!

What makes you proud and you share with others about your “culture”?

1. Resilience of our people.
2. Laughter is one good thing and connected to my family in a very strong way...we have a support network.
3. Our strengths.
4. Our humor. We know how to have fun and laughter. Also, respect for our elders.
5. Always helping each other with our children and teaching them our ways. We share and pass it on to our children what “culture” means.
6. Learning and sharing about our ceremonies. Proud to be part of them. The music gives you a very good feeling or a strong feeling.
7. Respect of our independent nation, our lake.
8. Our history and the things we have overcome. Being able to vote.
9. We are still here after all the history.
10. Resiliency and how we care for our young children. We care for our elders the same way. Certainly, before they are gone. We take care of our own.
11. Being known for our artistry. We are known for our floral designs.

continued on next page...

Guiding Principles



What are the core values of “culture?”

1. The Seven Teachings

How could “culture” be incorporated into the design?

1. Floral designs on the building.
2. Four directions colors: White - north, black-south, yellow-east and red-west.
3. Make it very unique! Designed to stand out! This place is ours!
4. Big dream catcher. Birch bark art. Beadwork displays.
5. Multi language signage.
6. Floral artwork.
7. Plan of our reservations and clans. Where are we from, showing tribal flags or other items from the area.
8. Room like that is circular without windows for dark room ceremonies (Traditional Room).
9. Stars and lighting on the top of circular room. Show the art of the people living at the Healing House.
10. Clan symbols and the medicine wheel, dream catcher, medicine wheel carpet.
11. Eagles and other important symbols should be shown.
12. Having a place to exercise so we can recreate and have wellness.
13. Lighting in the main entrance and the main door should be facing the east. West exit? Could be important.

How about connection to the inside/outside?

1. This would be important. Biophilia concepts.

Decisional “culture” ...what is a successful project that includes “cultural expression”?

1. Go “all out” Tribal College in Red Lake.
2. We need a spectacular building!

Focused Conversation



Conversation Design Template

Topic of conversation: Healing House	Description of participants in conversation: Staff / Users	Location: Zoom Meeting
What should participants know or do during the conversation: Share about their culture and values	What should participants feel during the conversation: Sense of being listened to, sharing	Time: 60 Minutes, 1 pm, April 5th, 2022

Opening:
We have been asked to have what we call a "focused conversation" with you to learn about your culture, to hear your voice & to gain inspiration on design.

O	What we see, hear, senses: facts; information	<ul style="list-style-type: none"> What first comes to mind when I say "Culture"? Colors, images, experiences... What specific images come to mind when we think about your culture? What are significant events or holidays that are important to your family or community? What words, phrases or sayings, in your culture, are significant or meaningful for other people to know?
R	Automatic feeling responses; like, dislike	<ul style="list-style-type: none"> What 's something unique or distinctive about your culture, language or experience that makes you proud and happy when others know of it or they recognize it as yours? What images or references do others make about your language, culture or history that connects with you emotionally? What inspires you about your culture?
I	Significance, purpose, we assign meaning	<ul style="list-style-type: none"> What stories, images, facts and experiences help teach others about your people and your culture? What are some core values from your culture that are valuable for others to know or experience? In what ways might culture be reflected or represented in the design? What would people see, hear, know, do or experience? What would be appropriate/inappropriate to include in design and why?
D	Choices, decisions, actions, resolve	<ul style="list-style-type: none"> How would you define success in incorporating culture in design, or, what would be in the design that would make you very pleased and happy? How would you like to be communicated with throughout this process? What next steps would you like to see?

Closing:
Thank you for taking the time to share your thoughts with us. We are honored to be a helper and to include your story in our design.

Focused Conversation

Structure Walk Through

1. Define the **Topic, Participants, Rational Objective, Experiential Objective, Time & Location** of Conversation to establish the filter for your brainstorming
2. Brainstorm multiple questions for each level, creating 'on-ramps' to the conversation for every participant
3. Select questions you will ask, based on the filters you created in 1.

O

OBJECTIVE

What we take in with our senses;
facts; information


R




REFLEXIVE

Automatic emotional response to what
we sense, perceive, pick up

I





INTERPRETIVE

Significance, purpose; we assign
meaning to what we see, hear, feel

D







DECISIONAL

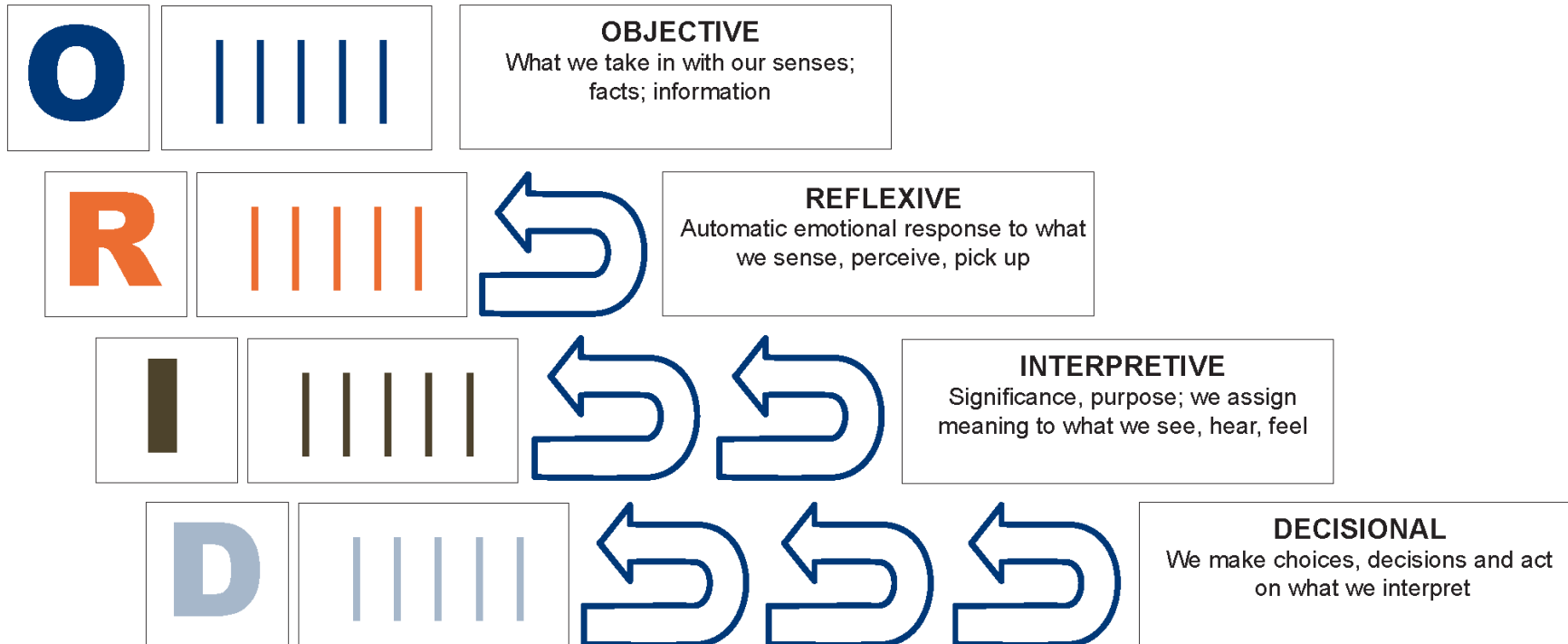
We make choices, decisions and act
on what we interpret



Focused Conversation

Overview of Structure

Topic of conversation: <i>What is the conversation going to be about?</i>	Description of participants in conversation: <i>Who will be in this conversation?</i>	Location: <i>Where will the talk happen?</i>
Rational Objective: <i>What should participants know or do during the conversation: What topics or information must be covered? What will people DO during the talk?</i>	Experiential Objective: <i>What should participants feel during the conversation: Define the emotional tone you will reinforce during the conversation</i>	Time: <i>How long will the conversation go?</i>
Opening, Setting the Stage for the Conversation to Begin: <i>Set people's expectations to participate - the topic, how long the conversation will last, why the conversation is happening, that this will be a Focused Conversation that you're facilitating</i>		



Closing: *Decide how you will signal to the group that the conversation is over, give everyone closure on the conversation.*

Room Allocation Table

Healing House Feasibility Study Room Allocation Table



Location Area Room/Space Quantity Size Sq. Ft Area totals: Building Totals: Comments:

Outdoor spaces

Location	Area	Room/Space	Quantity	Size	Sq. Ft	Area totals:	Building Totals:	Comments:
Outdoor spaces	Sharing							
		Firepit	1					benches around for storytelling
		Patio/BBQ	1					Big table for sharing meals and telescope
		Gazebo	1					
		Garden	1					Both vegetables, flowers and fruit. Composting area
		Healing Garden	1					Sage, Tobacco, Sweet Grass and Dogwood
		Sweat Lodge/Dressing Hd	1					Capacity: 8 - 12, Dressing House is adjacent and can hve some wood shed areas for the firepit
		Memorial Area	1					Respect for those lost to addiction
		Plantings for wildlife						

Outdoor spaces	Activites/Recreation							
		Volley ball	1					
		Basketball	1					
		Cultural Walking Trail	1					Benches, educational signagage about important plants like Cedar, Blueberries. Sweet Grass
		Dock and Swimming	1					Trampolines for the water! Private access.
		Reflection Space	1					some sort of cover for weather protection
		Playground	1					Tree house? Direct access from the Class Room, Playroom
		Smoking Area	1					

Outdoor spaces	Storage							
		Canoe Rack	1					
		Garage/Donation Building	1	24 x 24	576			Storing donated items for H.H residents, we really need to look at personal storage of furiture and other items.
		Shed	1	10 x 12	120			Storage of famiy items/personal items
		Animal area	1					Temporary

Indoor spaces

Indoor spaces	Shared (Main Lodge)							
		Entry Vestibule	1	8 x 8	64			Mailboxes and security. Located on the East side.
		Mud Room	1	10 x 12	120			Coats
		Kitchen	1	16 x 18	288			Island for seating and food prep, individual food storage, pot rack!
		Pantry	1	10 x 12	120			Recycling and composting areas, cleaning supply storage, mop sink
		Dining Area	1		600			Big table for sharing, maybe one or two small ones for privacy. Capacity: 20
		Study/Library	1	24 x 12	288			2 Computers and law books
		Quiet Room	1	12 x 16	192			
		Class Room	1		300			Near kitchen? Kitchenette. Projection and screen, chair and table storage.

Room Allocation Table

Healing House Feasibility Study Room Allocation Table



Location Area Room/Space Quantity Size Sq. Ft Area totals: Building Totals: Comments:

		Craft Space	1	14 x 14	196			Storage, deep sink, equipment might include long arm quilting machine/sewing, tables and chairs, art supply storage, screen/TV/monitor for zoom. Flexible to expand. Plaster trap in sink. Screen printing supplies and area.
		Display Space	4	4 x 24	96			In hallways but leave room. Perhaps sale area. (interiors including art from the inside...inmate art should be developed to include as a program)
		Traditional Room	1	14 x 14	196			Round, without windows, drum storage, possible outdoor access, no smoke detectors
		Living Room	1	16 x 18	288			Fireplace and shelves/bookcases for storage - not cluttered, tv
Possible Lower Level		TV/Recreation Room	1	12 x 16	192			Pool table, games
Possible Lower Level		Telephone Room(s)	3	6 x 4	72			small, zoom ready, fax and copy access
		Laundry Room	1	10 x 18	180			
		Playroom/Daycare	1	16 x 18	288			Storytelling corner, storage and sink, childcare?, Office and toilet?
		1/2 bath	2	8 x 10	160			Eater saving devices, baby changing tables
		Mothers Room	1	8 x 10	80			Sink, chair, changing table
Total Shared (Main Lodge)	NET					3720		

Private								
		Lodge 1 - Single	10	12 x 16	1920			Sleeping, walk in closets, tv hook ups
		Lodge 2 - Double	2	14 x 18	504			
		Lodges 3 - Family	6	14 x 20	1680			
		Lodge Baths	18	8 x 10	1440			shower, sink and toilet, energy and water saving devices
		Linen Storage	1	2 x 10	20			
		Aunties!	1	12 x 22	264			
		Caretaker Bath	1	8 x 10	80			
Total Private	NET					5908		

Caregivers								
		Office(s)	5	10 x 12	600			
		Toilet(s)	2	8 x 8	128			
		Conference Room	1	10 x 15	150			Capacity 8-10, sink and mini ref, microwave, zoom ready
		Reception Office	1	8 x 10	80			
Total Caregivers:	NET					958		

Support spaces								
Possible Lower Level		Mechanical/electrical	1		300			Battery storage?
Possible Lower Level		Storage Room	1		1700			
Possible Lower Level		IT/Telephone Room	1	12 x 10	120			
Total Support Spaces	NET					2120		

Room Allocation Table

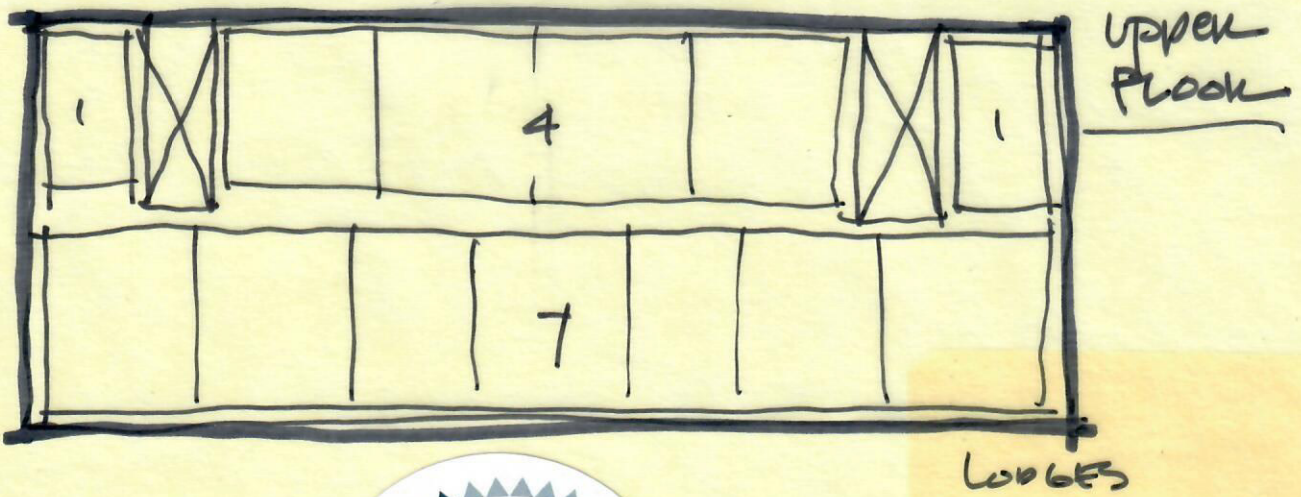
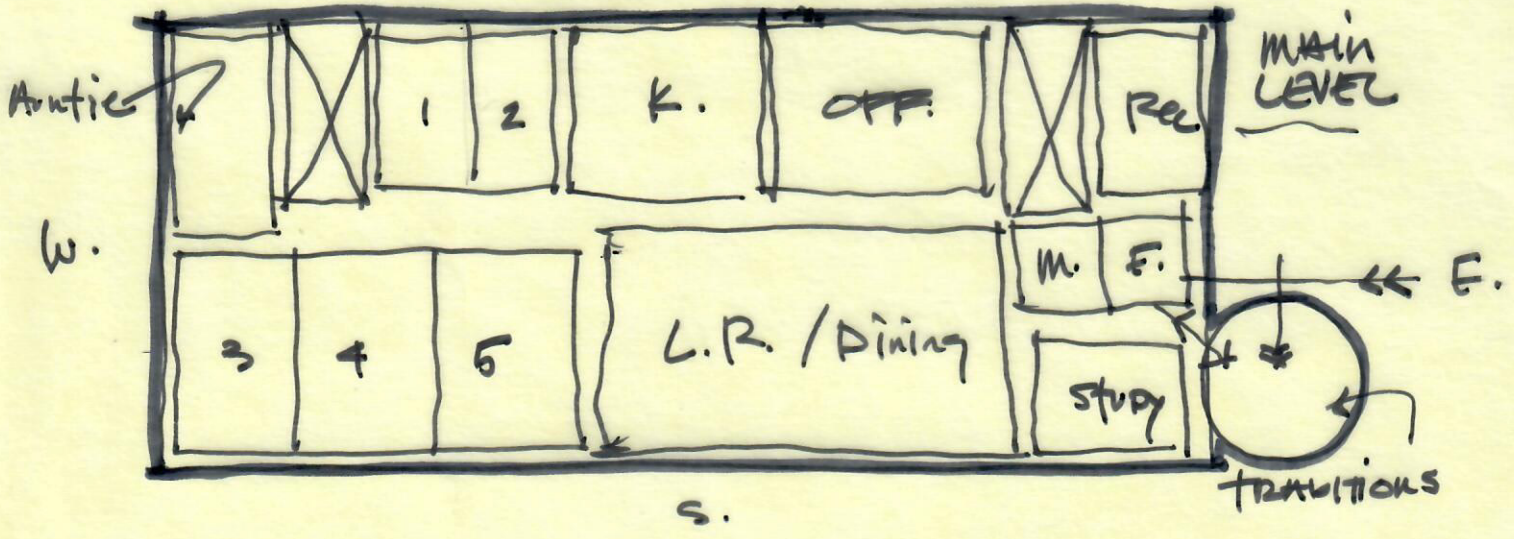
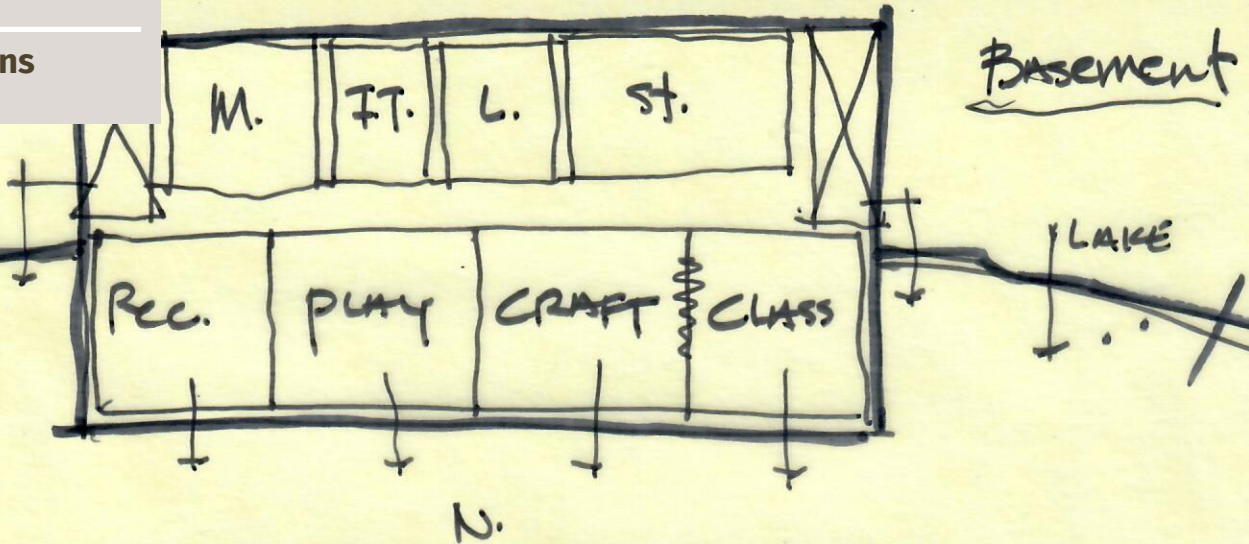
Healing House Feasibility Study

Room Allocation Table

Location	Area	Room/Space	Quantity	Size	Sq. Ft	Area totals:	Building Totals:	Comments:
Grossing Factors - Building:								
Total NET:							12706	
Subtotal:							12,706	
Net x 1.30 circulation:							16517.8	
Subtotal:							16,518.00	
x10% walls:							1651.8	
TOTAL Building :							18,169.80	

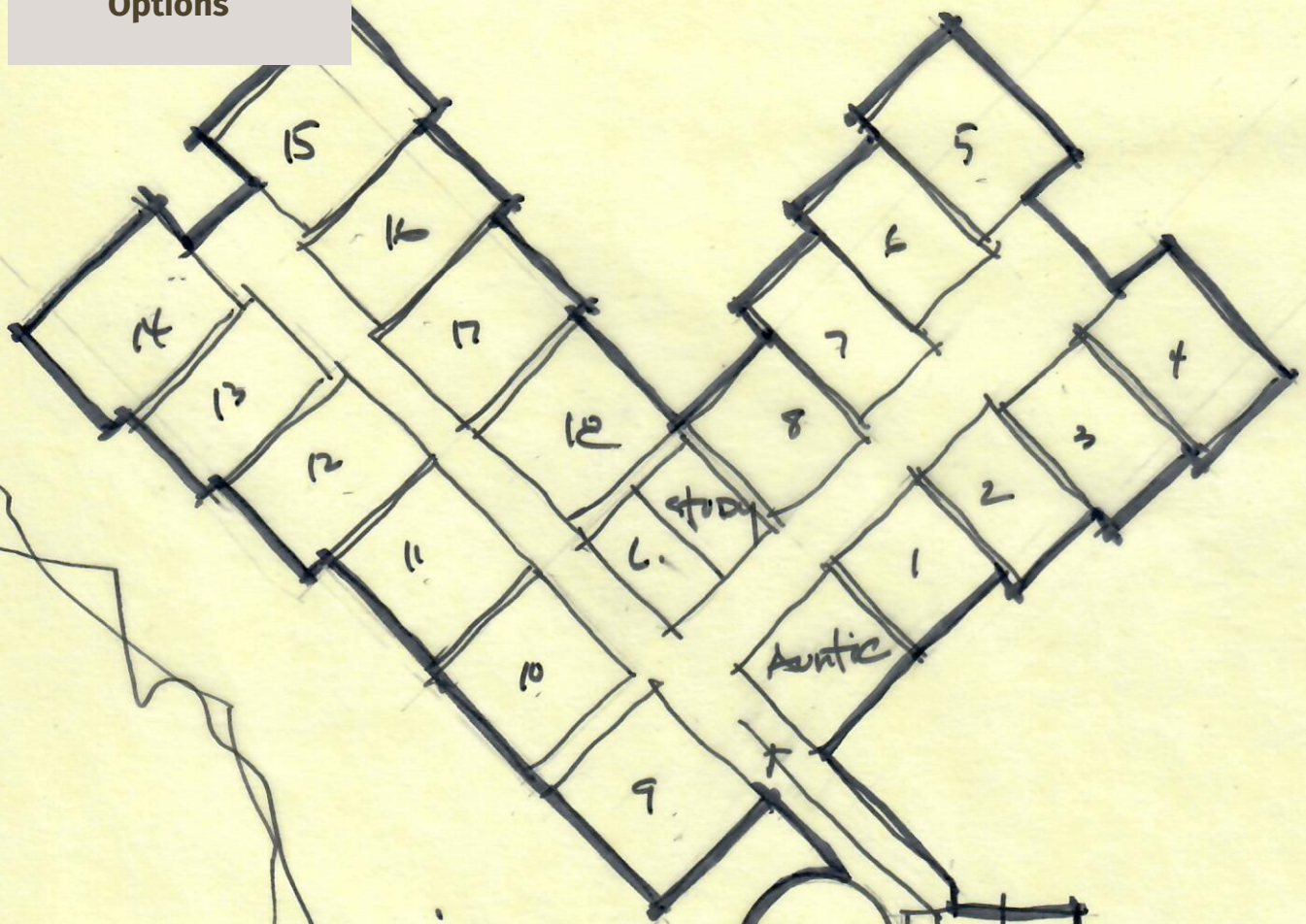


Options



OPTION A
N.T.S. 9.6.22

Options



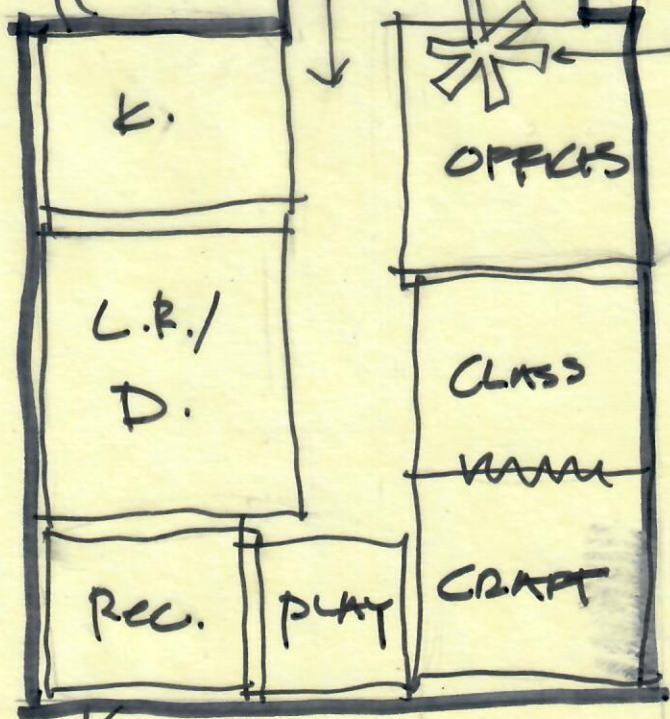
Ac.

VIEW

TRADITION

E.

EAST



WELCOME

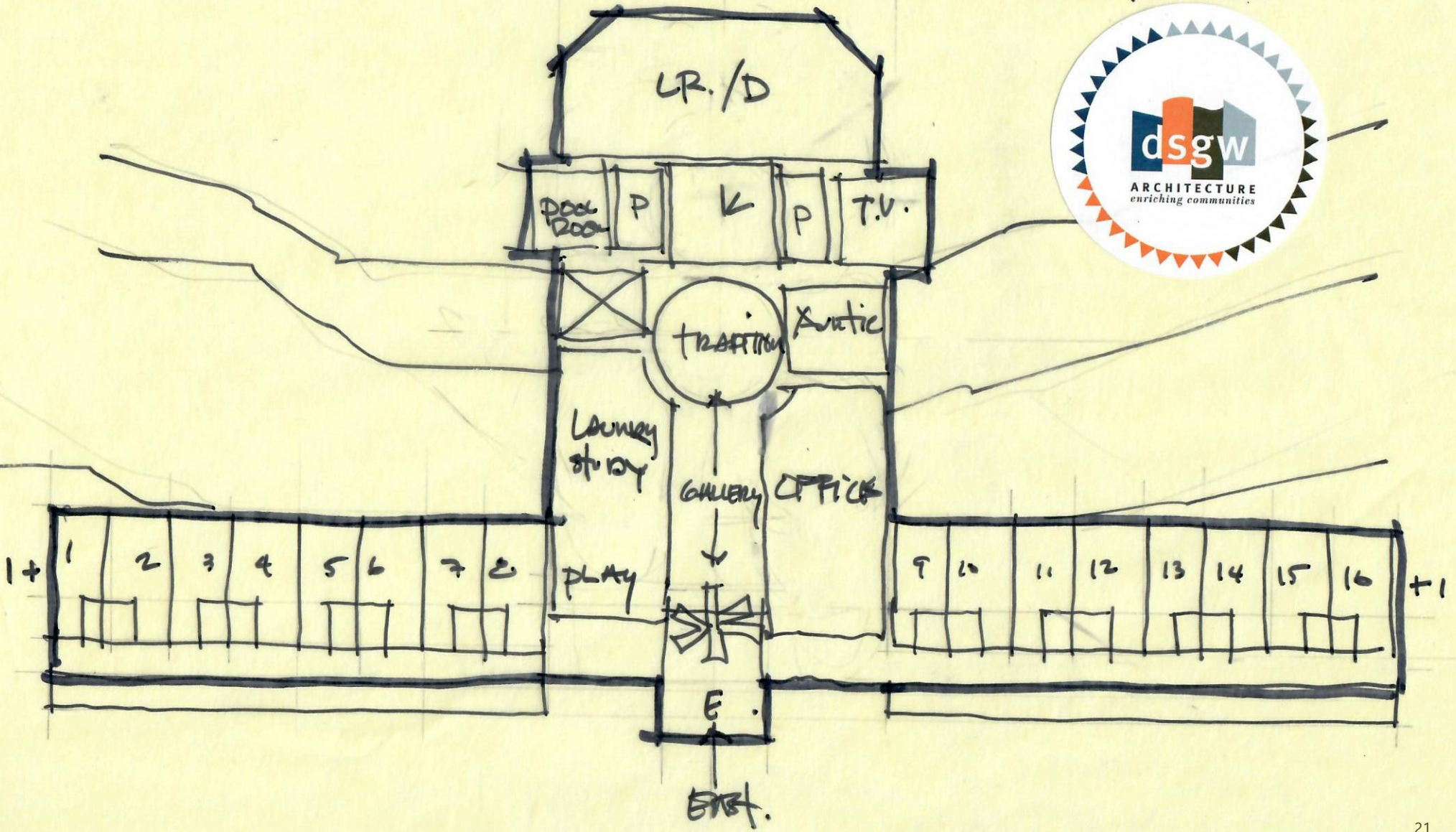


OPTION B
N.T.S 4.6.20
MEET LOWELL.

Lake

OPTION C

N.T.D. 9.6.22



Exterior Rendering and Discussion

Site Discussion/Criteria:

1. By the lake...Lake Bemidji but away from downtown
2. Want to go down by the Old Cass Lake Road Area.
3. In the woods and more of a rural.
4. Public transportation from the Healing House.
5. Rural, near a lake, part ways between Cass Lake and Bemidji. On the reservation.

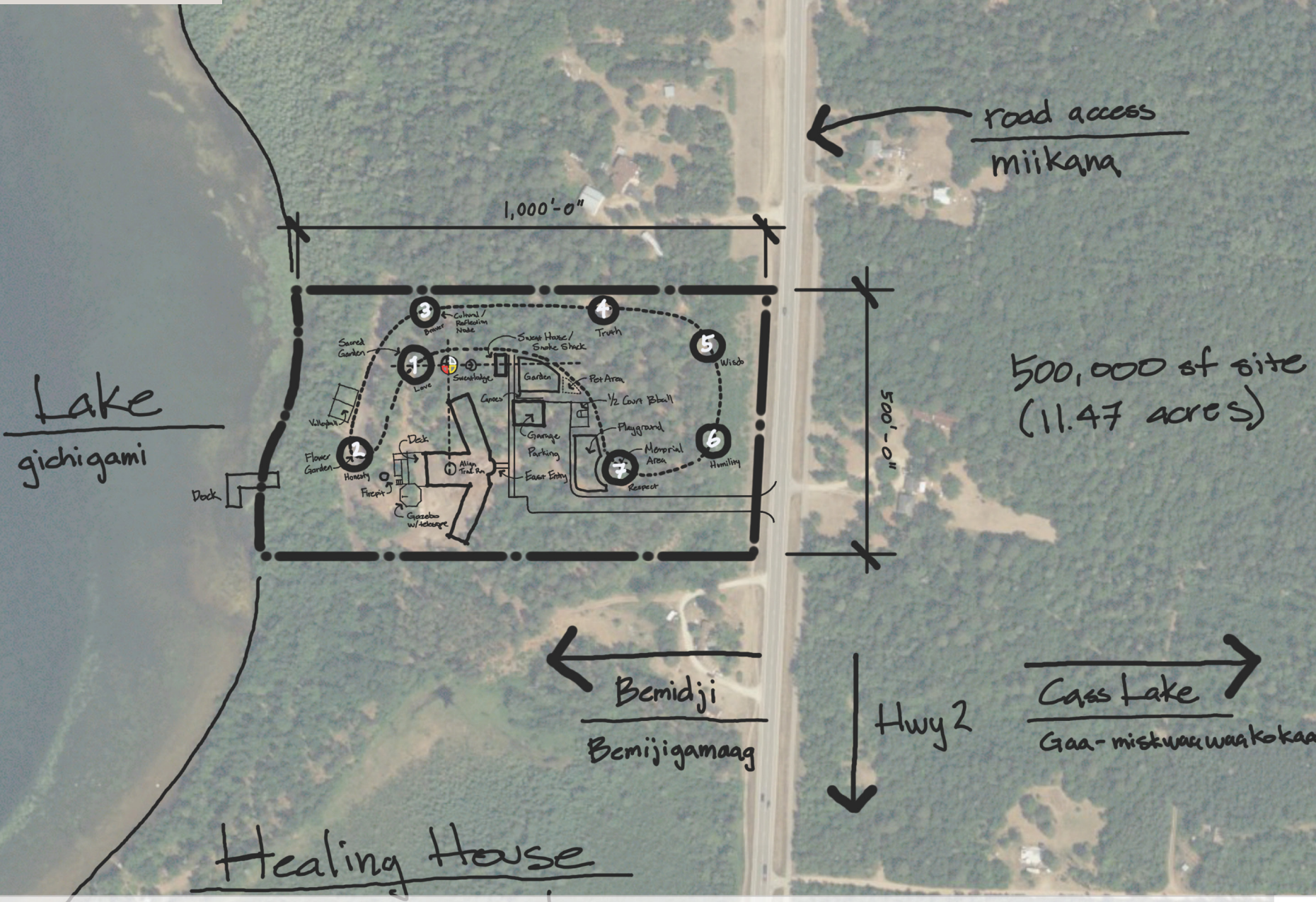
Criteria (note repeated items are in bold)

- a. Rural**
- b. Big enough for the outdoor activities and privacy.
- c. Near on a lake (water features?).**
- d. In the north woods.
- e. On the reserve.**
- f. Fence for privacy and safety
- g. Internet access.
- h. 2-3 acres**
- i. School bus access.
- j. South orientation and geothermal possibilities**

Exterior, Elements, Features and Description

1. Floral designs could be part of the exterior.
2. Jingle Dress elements.
3. Log style building.
4. Not institutional.
5. Welcoming and comforting!
6. Capture pieces of a "long house" or wigwam or teepee.
7. Fan canopy at the entry.
8. Show off and display our artistry and those of our community.
9. Star quilt design on the outside.
10. Wood design on the outside.
11. Floral design on the wood.
12. Dream catcher could be part of the outside.
13. Wood burning or other art on the exterior of the building.
14. Braided design elements.
15. Something unique to you.
16. Loud and proud!! Colorful, expressive!
17. Is red appropriate? Yes.
18. Use the four colors of the four directions.
19. Red walking path (the Red Road).

Site Plan



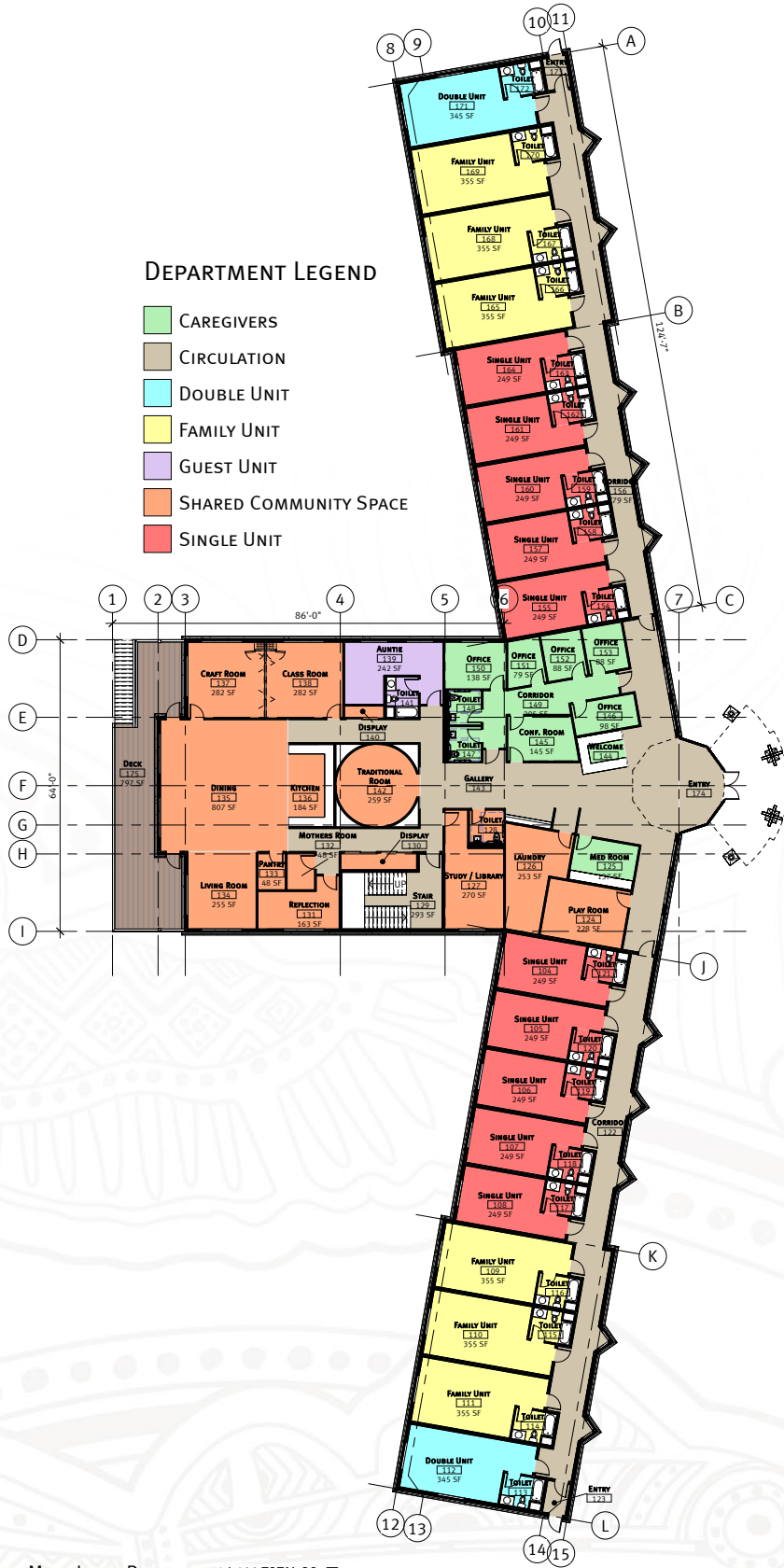
Healing House

noojimo'iwewin endaaayan

Building Floor Plan Further Development

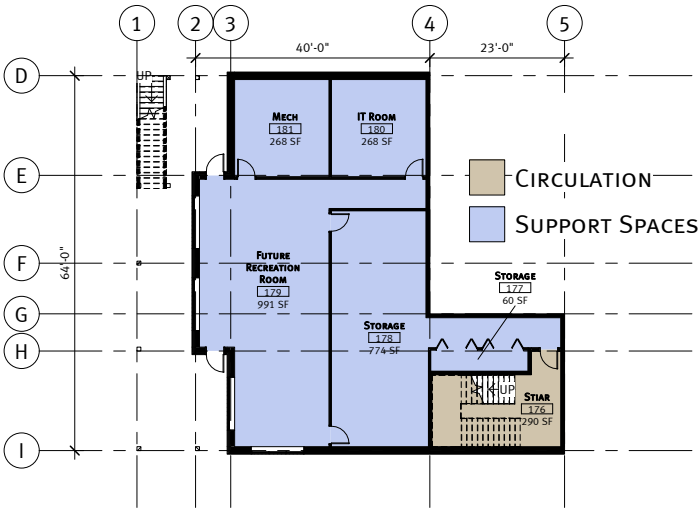
DEPARTMENT LEGEND

- CAREGIVERS
- CIRCULATION
- DOUBLE UNIT
- FAMILY UNIT
- GUEST UNIT
- SHARED COMMUNITY SPACE
- SINGLE UNIT

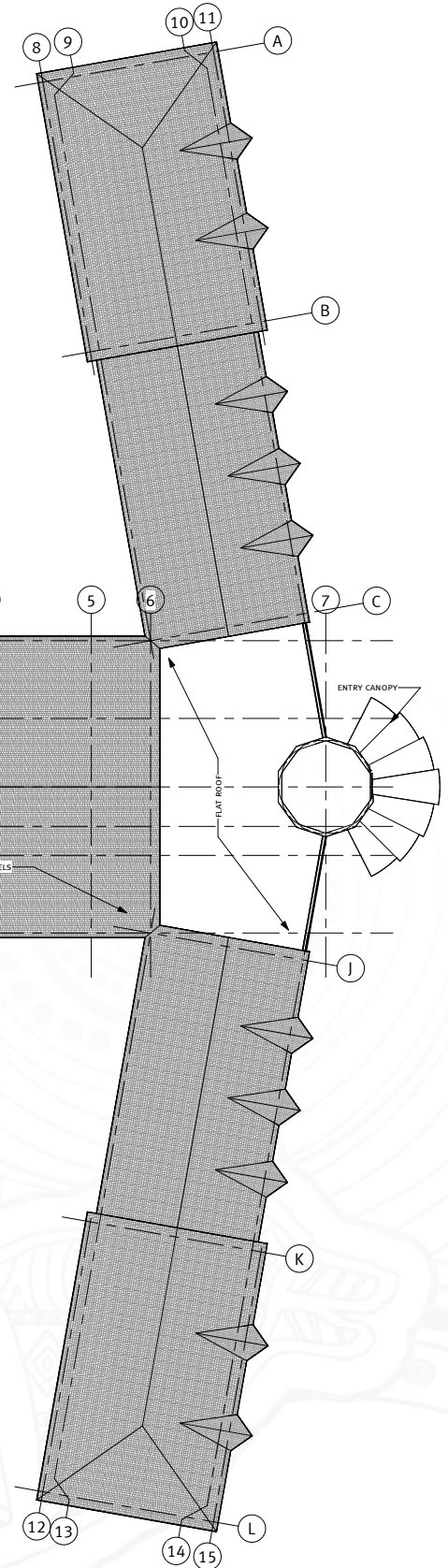


① MAIN LEVEL PLAN 16,422 TOTAL SQ. FT.
1/16" = 1'-0"

Building Floor Plan Further Development

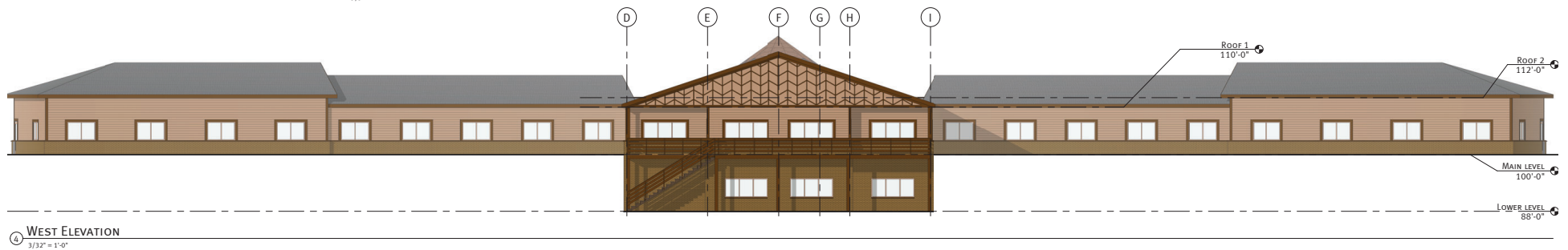
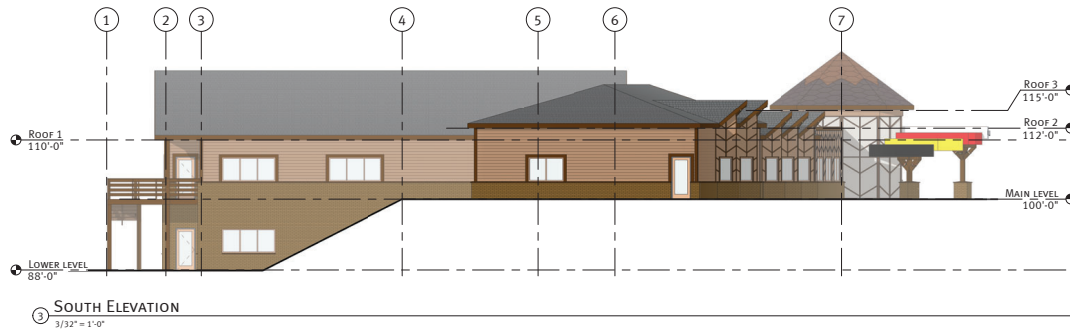
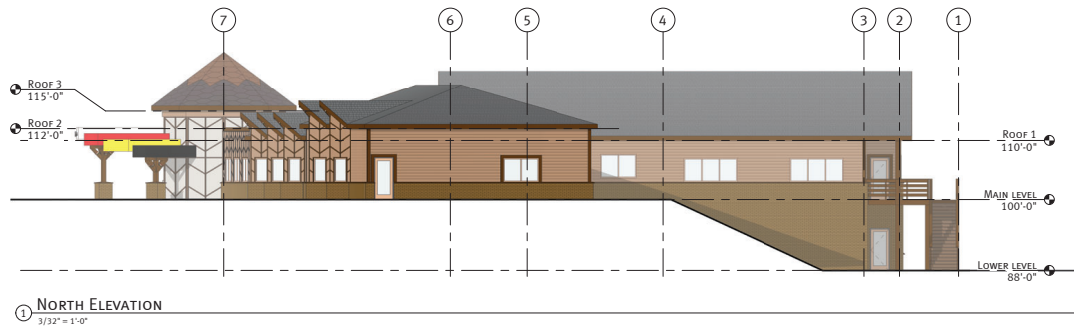
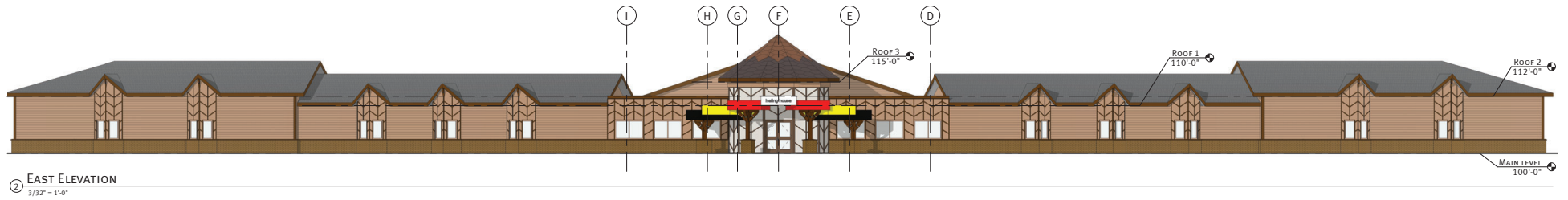


② LOWER LEVEL PLAN 2,996 TOTAL SQ. FT.
1/16" = 1'-0"

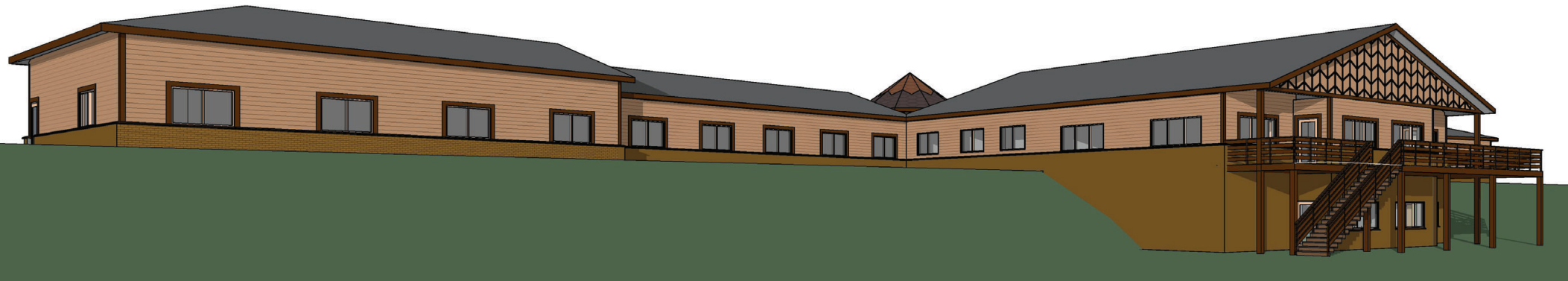
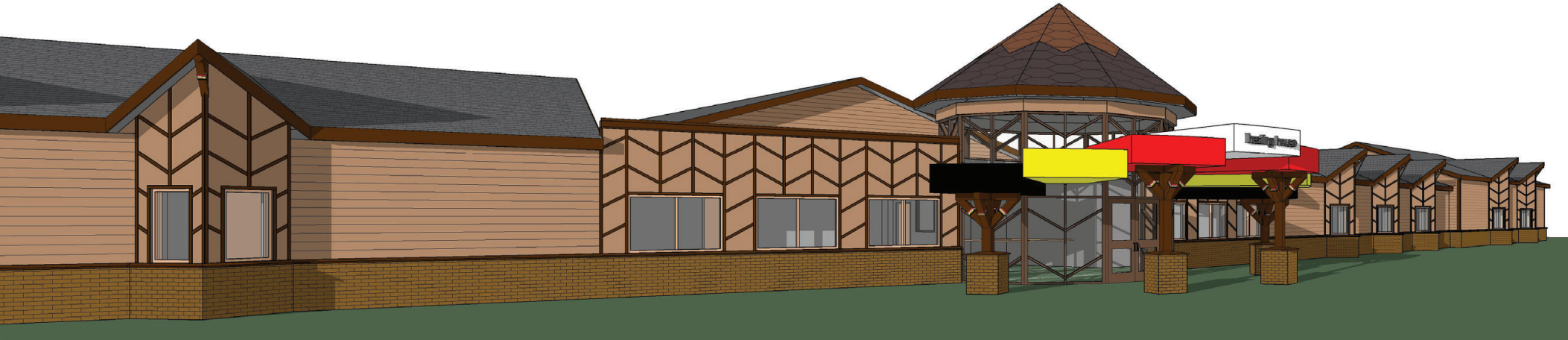


③ ROOF PLAN
1/16" = 1'-0"

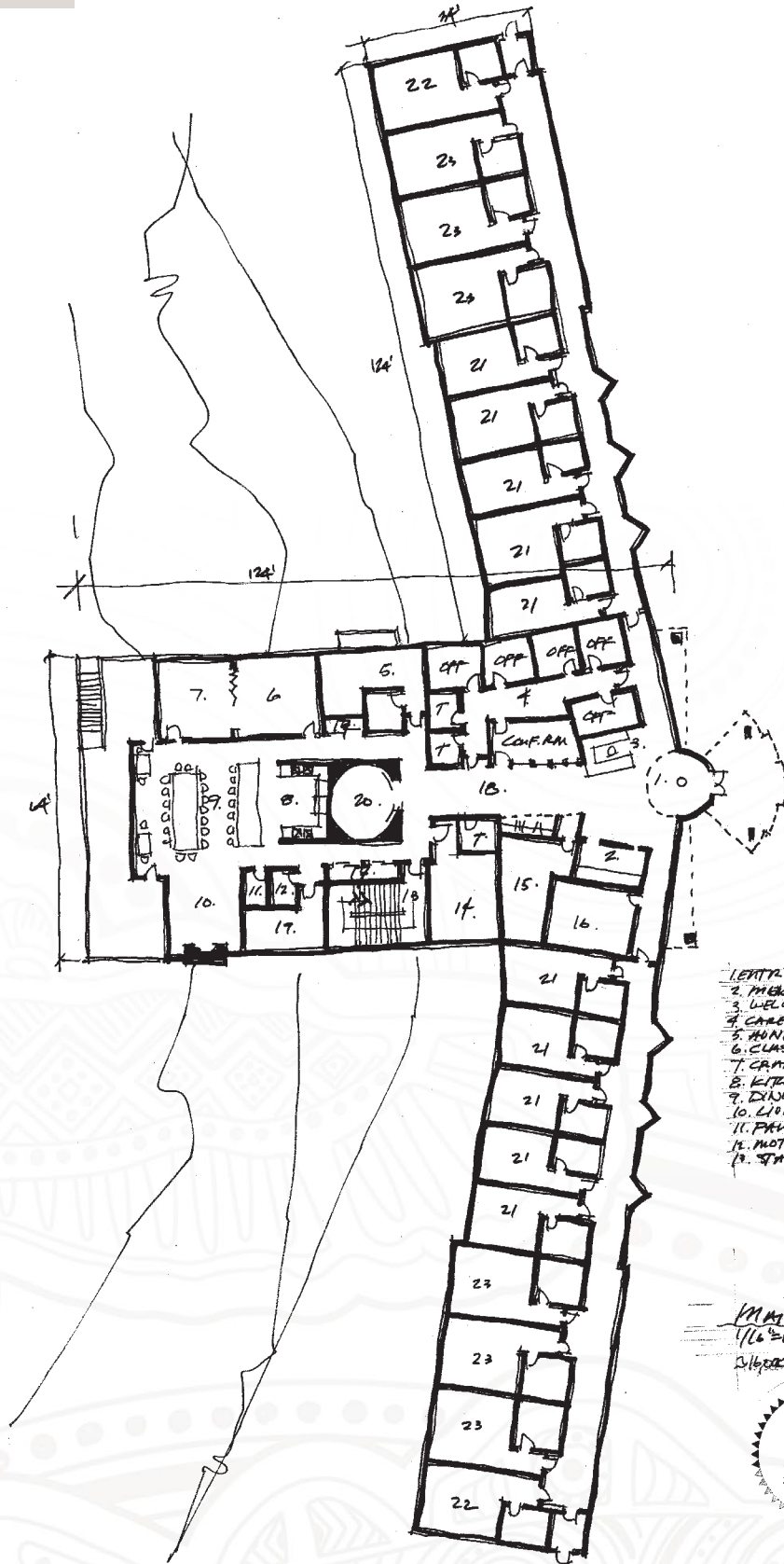
Building Floor Plan Further Development



**Building Floor Plan
Further Development**



Building Floor Plan



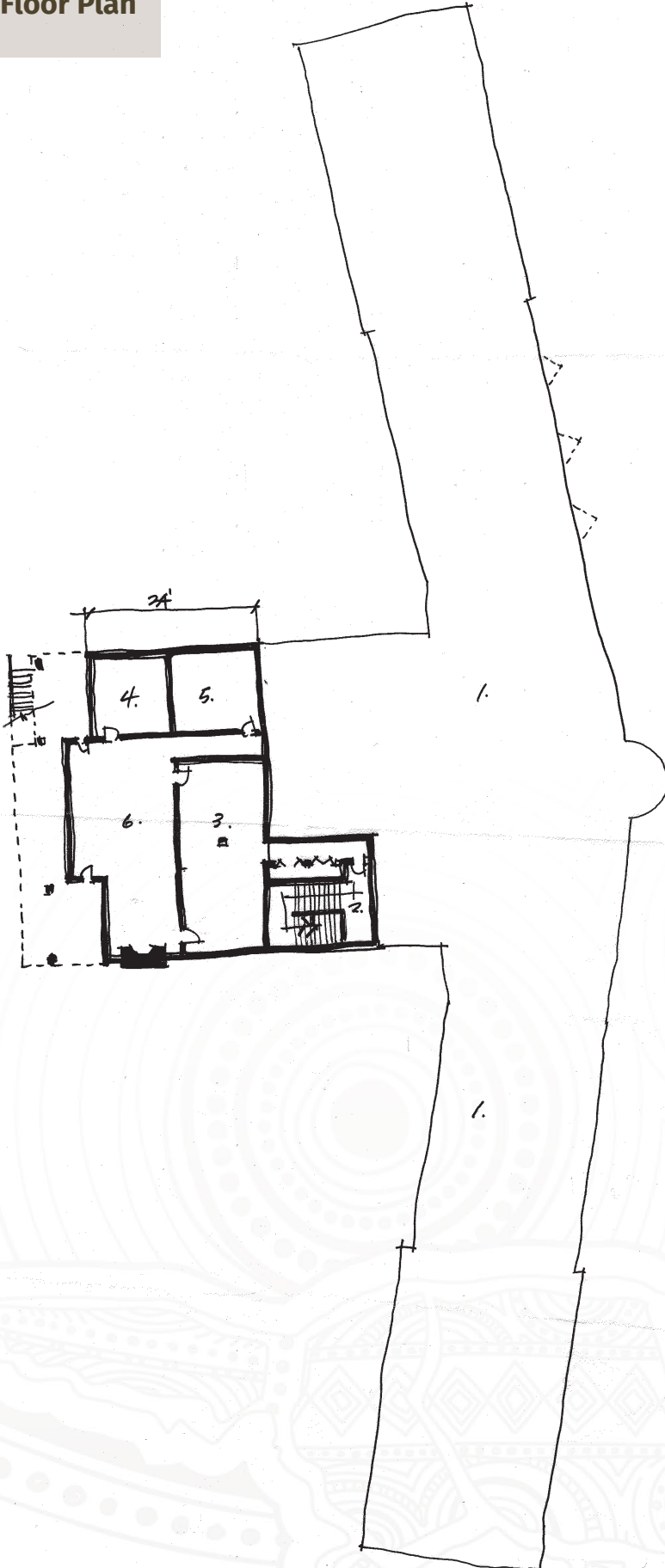
- 1. ENTRY
- 2. MELO ROOM
- 3. WELCOME
- 4. CARGO/UTENS
- 5. HUNTER
- 6. CLASSROOM
- 7. CRAFT ROOM
- 8. KITCHEN
- 9. DINING
- 10. LIVING ROOM
- 11. PRATYH
- 12. MOTHERS ROOM
- 13. STAIRS
- 14. STUDY - LIBRARY
- 15. LAUNDRY
- 16. PLAY ROOM
- 17. DISPLAY
- 18. GALLERY
- 19. REFLECTIONS
- 20. TRANSITIONAL COR.

- COOLERS:
- 21. SINGLE (10)
 - 22. DOUBLE (6)
 - 23. FAMILY (2)

Main Level - Henning House
 1/16" = 1' 0"
 4-6-22
 S. HERRON + K. CAMPBELL



Building Floor Plan

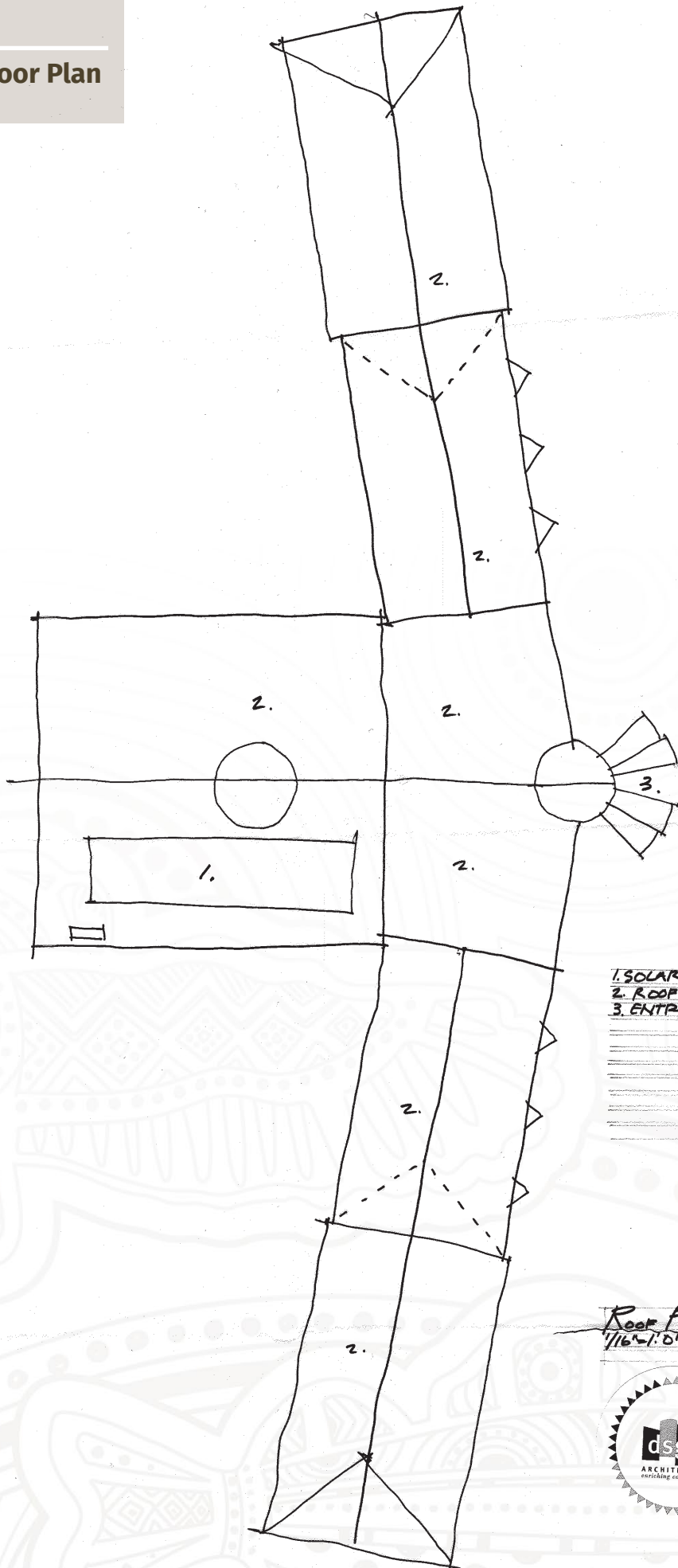


- 1. UNDEVELOPED - SLAB ON GRADE
- 2. STAIRS
- 3. STAIRS
- 4. MECH. ROOM
- 5. F.T. / ELEC.
- 6. FUTURE RECREATION ROOM

LOWER LEVEL - HEALING HOUSE
4/16/2022
2 2600 sq ft CONTINUOUS



Building Floor Plan



- 1. SOLAR PANELS
- 2. ROOF AREA
- 3. ENTRY CANOPY

Roof Plan - Healing House
1/16/21, 01
4-6-22



Cost Estimate



Owner: **Owner**
 Project: **Healing House**
 Location: **Bemidji, MN**
 Architect: **DSGW Architects**

Healing House (Bemidji)

Concept System Budget Level of Detail
 System Cost Summary

Date: 05.16.2022
 Project Start: TBD
 Completion: TBD
 Cost Model File: None
 Cost Index File: None

Drawings: 04.26.2022

Item Description	Acres			Units			GSF/Unit		Project Total	% Of Total
	5.00			18			1,033			
	Site			Healing House			GSF/Floor			
	Unit Cost/ Bldg. Area	Percent Dir. Cost	Total Cost	18,600	GSF	1	18,600			
SUMMARY:										
Div 2	BUILDING SITE IMPROVEMENTS/DEMOLITION	\$92.05	73.49%	\$1,712,183	\$0.00	0.00%	\$0		\$1,712,183	20.97%
Div 2	EXCAVATION & BACKFILL	\$0.00	0.00%	\$0	\$2.50	0.80%	\$46,500		\$46,500	0.57%
Div 3	FOUNDATION/SLAB-ON-GRADE	\$0.00	0.00%	\$0	\$16.65	5.31%	\$309,689		\$309,689	3.79%
Div 3, 4, 5	STRUCTURE	\$0.00	0.00%	\$0	\$40.00	12.75%	\$744,000		\$744,000	9.11%
Div 7, 8	EXTERIOR ENCLOSURE	\$0.00	0.00%	\$0	\$32.00	10.20%	\$595,200		\$595,200	7.29%
Div 7	ROOFING SYSTEM	\$0.00	0.00%	\$0	\$8.50	2.71%	\$158,100		\$158,100	1.94%
Div 8, 9, 10	INTERIOR CONSTRUCTION	\$0.00	0.00%	\$0	\$50.00	15.94%	\$930,000		\$930,000	11.39%
Div 11, 12	EQUIPMENT	\$0.00	0.00%	\$0	\$6.50	2.07%	\$120,900		\$120,900	1.48%
Div 14	CONVEYING SYSTEMS	\$0.00	0.00%	\$0	\$0.00	0.00%	\$0		\$0	0.00%
Div 15	PLUMBING	\$0.00	0.00%	\$0	\$15.00	4.78%	\$279,000		\$279,000	3.42%
Div 15	MECHANICAL	\$0.00	0.00%	\$0	\$47.31	15.08%	\$879,900		\$879,900	10.78%
Div 15	FIRE PROTECTION	\$0.00	0.00%	\$0	\$5.50	1.75%	\$102,300		\$102,300	1.25%
Div 16	ELECTRICAL	\$4.97	3.97%	\$92,500	\$19.02	6.06%	\$353,700		\$446,200	5.47%
	CONTINGENCY-Contractor & Design Progression	\$11.16	8.91%	\$207,528	\$27.94	8.91%	\$519,692		\$727,220	8.91%
	GENERAL CONDITIONS	\$9.70	7.75%	\$180,468	\$24.30	7.75%	\$451,929		\$632,397	7.75%
	PERMIT/BOND/BR/GL-SG/TESTING/INSPECTION	\$2.55	2.04%	\$47,446	\$6.39	2.04%	\$118,814		\$166,259	2.04%
	ESCALATION	\$0.00	0.00%	\$0	\$0.00	0.00%	\$0		\$0	0.00%
	SUBTOTAL	\$120.44	96.15%	\$2,240,125	\$301.60	96.15%	\$5,609,723		\$7,849,848	96.15%
	DESIGN FEE	\$0.00	0.00%	\$0	\$0.00	0.00%	\$0		\$0	0.00%
	CONTRACTOR FEE	\$4.82	3.85%	\$89,605	\$12.06	3.85%	\$224,389		\$313,994	3.85%
	ESTIMATED COST BY AREA	\$125.25	100%	\$2,329,730	\$313.66	100%	\$5,834,112		\$8,163,842	100.00%

Total Project Cost Estimate	
\$8,163,842	
\$439	per GSF
18,600	GSF

\$/Acre	\$465,946
----------------	------------------

Projected Total Cost Range		Projected Site Range		Projected Construction Range	
Low	High	Low	High	Low	High
\$ 7,755,846	\$ 8,630,180	\$ 2,096,757.07	\$ 2,562,703.08	\$ 5,659,089	\$ 6,067,476
\$ 416.98	\$ 463.99	\$ 112.73	\$ 137.78	\$ 304.25	\$ 326.21

Exterior
Renderings



Appendix

- A. Media Articles
- B. Charette Conclusion Presentation



Plans for Indigenous-centered Healing House underway in Bemidji

The beginnings of a feasibility study for a proposed Healing House project were presented on Thursday at the Northwest Indian Community Development Center.



Natasha Kingbird, lead coordinator for the Northwest Indian Community Development Center, speaks during a Healing House presentation on Thursday, April 7, 2022, at the NWICDC. Madelyn Haasken / Bemidji Pioneer

By [Nicole Ronchetti](#)

April 08, 2022 02:31 PM

BEMIDJI — In a dimmed room filled with community members and government officials, a presentation was given on Thursday that took a project three years in the making one step closer to reality.

The presentation, held April 7 at the Northwest Indian Community Development Center in Bemidji, marked the completion of the first part of a feasibility study on a project called the Healing House.

The proposed center would provide space and assistance for Indigenous women who have experienced different forms of violence or abuse and who have been involved with the criminal justice system.

“It’s a good day to start on a different journey and a pathway and think about our Native citizens here as valued assets and community members,” Martin Jennings, executive director of the NWICDC said. “It all starts with family. It starts with women.”

Native American women, who are already more likely to be victims of sexual violence and abuse, also experience disproportionate levels of incarceration. This project would aim to address the connection between these statistics, and help women as they re-enter their communities.

“We know that so many of the women who are in (Department of Corrections) custody are also victims,” said Nikki Engel of Violence Free Minnesota, who has worked with Natasha Kingbird of the NWICDC on the project since its inception in 2019.



Nikki Engel of Violence Free Minnesota speaks during a Healing House presentation on Thursday, April 7, 2022, at the Northwest Indian Community Development Center. Madelyn Haasken / Bemidji Pioneer

One of the first steps of the project was hearing the stories of Native American women who were experiencing incarceration and listening to what they needed from a project designed for them.

“Being with the women and listening to them, seeing them on the ground every day, also seeing women after all these years pull themselves together,” Kingbird said. “It’s brought me to support these women and really look at the issues they face.”

The team interviewed 62 incarcerated Indigenous women who told them about their histories, their childhoods and their traumas.

“We wouldn’t be where we are today without the generosity of those women in sharing their stories,” Engel said, “trusting that those stories were going to go somewhere to influence change in Minnesota.

The Healing House would serve as a transitional home for Native American women after they are released from custody, but unlike other facilities with similar purposes, this center would be built on the foundations of Indigenous culture.

“We’re understanding collectively that culture is the only answer,” said Renee Gurneau, a community member who attended the event. “We’re used to other people calling the shots in our lives rather than our own people, our own spirituality.”



Community member Renee Gurneau makes a comment during a Healing House presentation on Thursday, April 7, 2022, at the Northwest Indian Community Development Center.

Madelyn Haasken / Bemidji Pioneer

This led the project team to partner with DSGW, a Minnesota-based architectural firm that specializes in Indigenous design and has partnered with tribes across the U.S. on projects like the Ain Dah Yung Center, an emergency shelter for Native American youth in St. Paul.

They brought in DSGW architects Michael Laverdure and Rebecca Lewis to conduct a feasibility study on the proposal, and to bring together all of the team's ideas into something that could become a reality.

An Indigenous design

The project's team spent two and a half days working with Laverdure and Lewis discussing what the Healing House should look like, what it might include and how traditional Anishinaabe culture could be included in the structure.

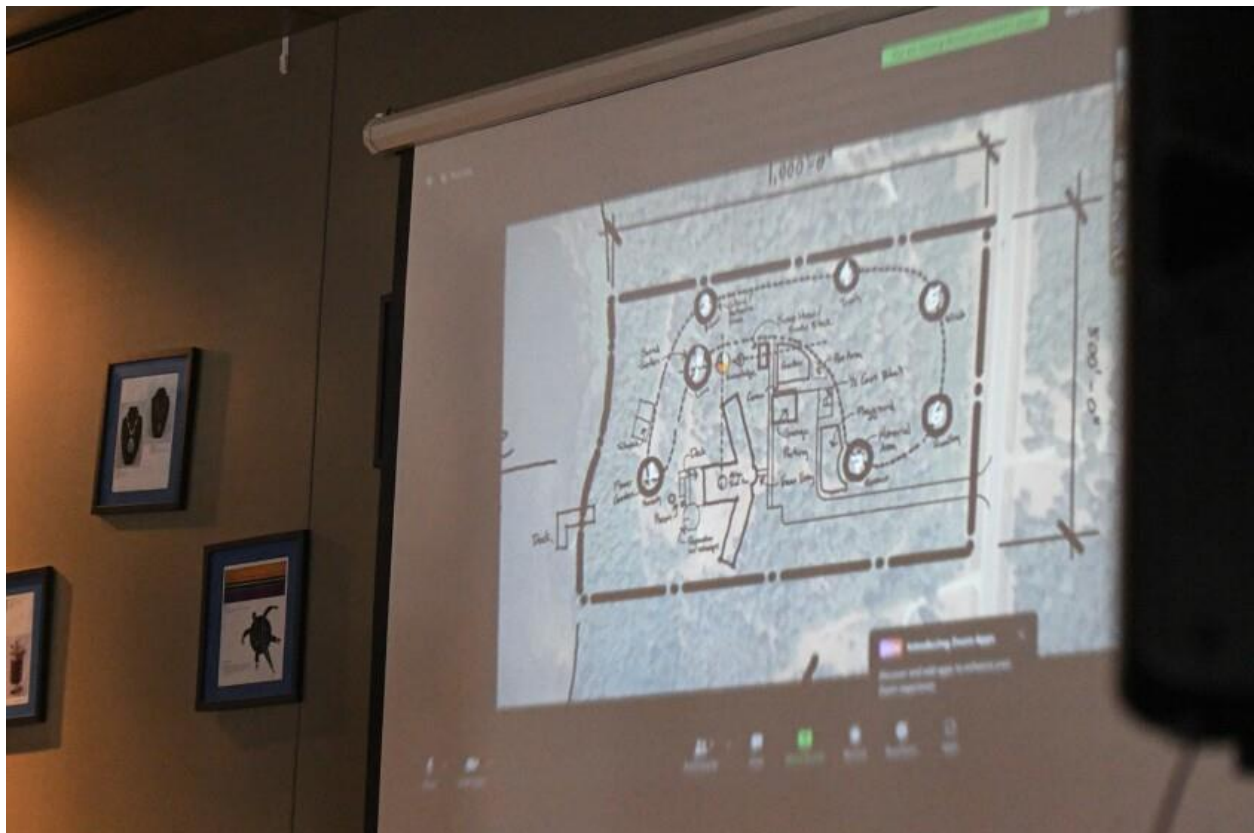
"It's a really intense period of planning," Laverdure said. "It's always fun to see how different people perceive culture."

As the conversation progressed, different priorities came to light: creating a safe haven, incorporating nature and the outdoors and giving the center's residents the ability to choose.

"I think choice is sometimes taken away from us in so many different places, but sometimes inadvertently architects can take it away from us with buildings, too," Lewis said. "What people told us is important to them is that when they come in that front door ... they had the ability to choose."

These ideas led to the creation of a rough site plan that outlined what a finished Healing House might look like. The plan includes a building with two wings of living spaces and a central area that would be for social gatherings and programs.

It also detailed a sketch of what the outdoor space might look like, which included multiple cultural considerations like a sweat lodge and a sacred garden where traditional medicines like tobacco and sage would grow.



A map of a rough site plan for the Healing House is shown to attendees during a presentation on Thursday, April 7, 2022, at the Northwest Indian Community Development Center.

Madelyn Haasken / Bemidji Pioneer

Also in the plan was a walking path with areas of reflection based on the Seven Grandfather Teachings from Anishinaabe culture: love, respect, bravery, courage, truth, humility and wisdom.

The last of these reflection points would serve as a memorial for victims of violence and abuse who didn't make it, and it would be one of the first things people would pass as they approach the center.

Another focus of the group was ensuring the sustainability of the project. This would be done by promoting cultural teachings of sustainability alongside green building practices.

"All of these things kind of align with the core of this project, of healing, not just themselves but of Mother Earth," Laverdure said.

While not a formal plan, the study created a set of guiding principles for the project that will be used and looked back on as the Healing House progresses.

"This is just a study, so things change," Lewis said, "but this study will help provide that foundation for the ideas and all of that thought process on how to make this project successful."

Next steps

The second part of the feasibility study will decide what the center will look like and estimate what it might cost. The full report is expected at the end of June.

In the meantime, the team is looking to hire a project manager, funding for which is included in the proposed budget bill currently in the Minnesota Legislature.



Attendees listen to a speaker during a Healing House presentation on Thursday, April 7, 2022, at the Northwest Indian Community Development Center.
Madelyn Haasken / Bemidji Pioneer

Local elected officials at the presentation offered their assistance and agreed to support and collaborate with the Healing House team as the project continues.

“This is really encouraging to see stakeholders in the city in this space with us working cooperatively together,” Jennings said. “This is really critical work that we’re involved in.”

While plans for the center develop, the ideas that it’s built on are being put into action with a small-scale version of the project beginning in Bemidji.

This “prototype” is a partnership between the Department of Corrections and the NWICDC, which rented a small house to provide transitional housing that’s built on a cultural foundation. Its first resident will move in during the next few days.

“This will really be building off what Northwest Indian Community Development Center already does,” said Liz Richards, who manages victim services for the Department of Corrections. “This is the first step taken here. Hopefully, this is the beginning of a lot of conversations and work that’s going to be happening.”



Liz Richards with the Department of Corrections speaks during a Healing House presentation on Thursday, April 7, 2022, at the Northwest Indian Community Development Center.

Madelyn Haasken / Bemidji Pioneer



APRIL 2022

Healing House Charette



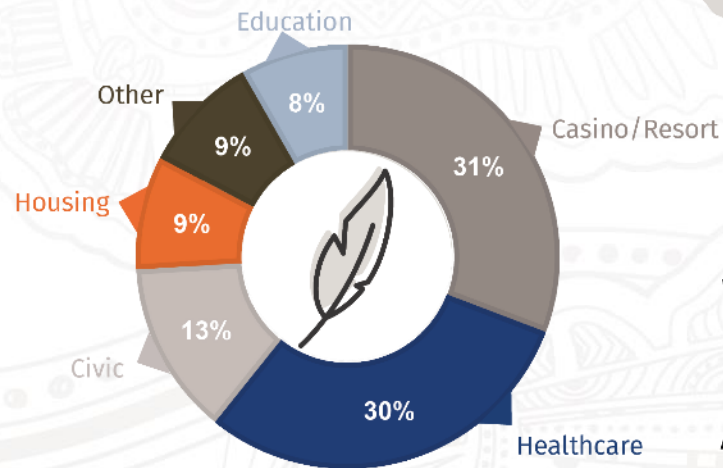
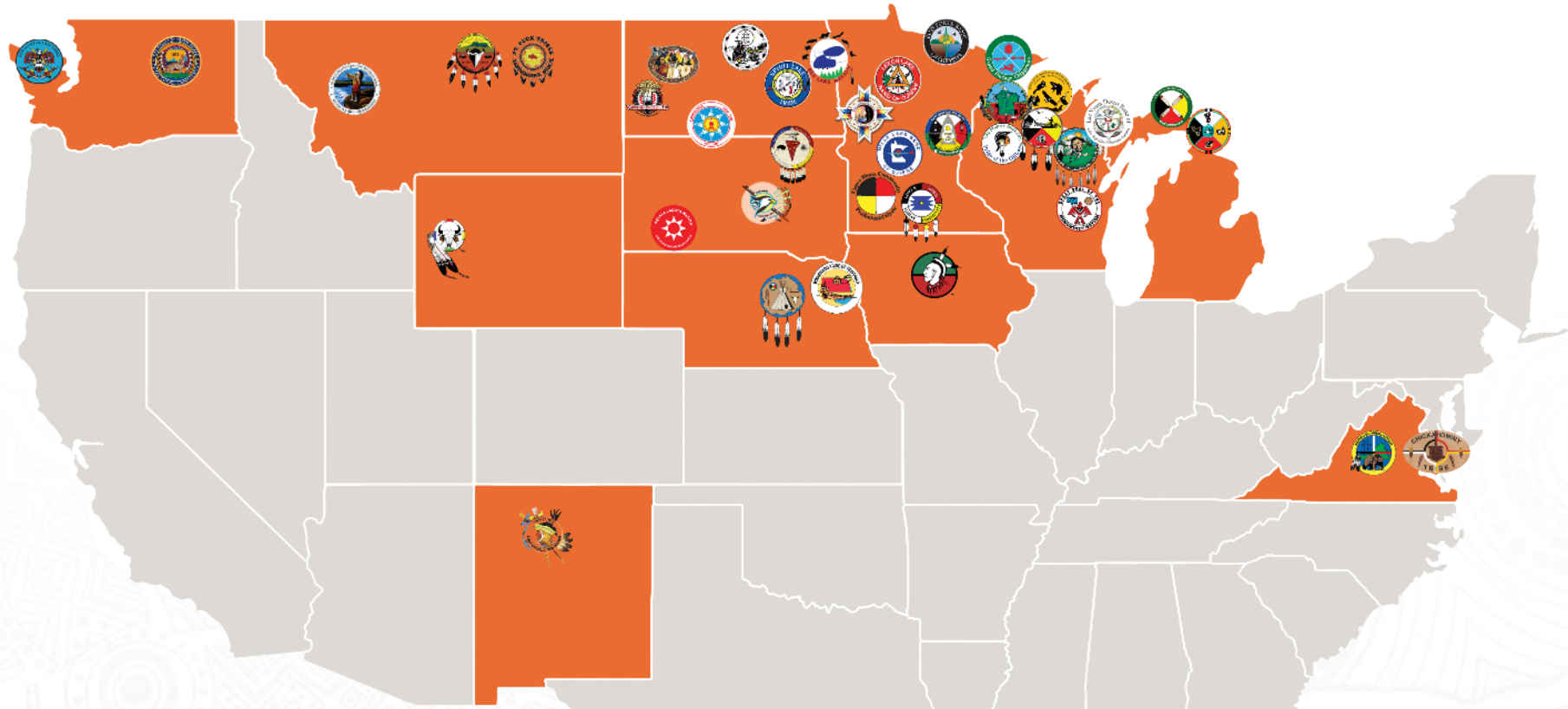


Mike Laverdure
AICAE, AIA, LEED AP, NCARB
Principal, Architect
Experience: 25 Years



Rebecca Lewis
FAIA, FACHA, CID
Partner Emeritus, Architect
Experience: 36 Years

Our Team



**Over 400 Projects
Working With Over 30 Tribes
Across 12 States**



Our Process



Charette

- **A CHARETTE IS AN INTENSE PERIOD OF PLANNING AND DESIGN ACTIVITY**
- **TYPICALLY SPANS A FEW DAYS**
- **THIS PROCESS WILL HELP A GROUP UNDERSTAND THEIR WANTS AND NEEDS IN FORMAT THAT CAN BE SHARED**



Programming

- **DECIDING WHAT TO BUILD**
- **INTENSE LISTENING TO LEARN WORKSHOP**
- **DISCUSS GOALS, WANTS VS NEEDS, FUNCTION OF THE PROJECT, DESIGN EXPECTATIONS AND BUDGET**
- **ASSEMBLE THE DISCUSSION INTO A “PROGRAM” WHICH OUTLINES THE SPACES AND ASSIGNS A SIZE OR SQUARE FOOTAGE**



Conceptualizing

- **IN A CHARETTE PROCESS, YOU MIGHT SEE THE ARCHITECTURAL TEAM REACT TO THE WORKSHOP INFORMATION AND PROVIDE SIMPLE LINE DRAWINGS AND DIAGRAMS, WITH MULTIPLE OPTIONS**
- **IN A CONCEPTUALIZATION REVIEW WORKSHOP THE GROUP WILL TALK ABOUT THEIR LIKES/DISLIKES**
- **MANY TIMES A HYBRID OPTION THAT COMBINES PARTS OF DIFFERENT OPTIONS IS SELECTED**

O

Objective

What we take in with our senses; facts; information

R

Reflexive

Automatic emotional response to what we sense, perceive, pick up

I

Interpretive

Significance, purpose, we assign meaning to what we see, feel

D

Decisional

We make choices, decisions and act on what we interpret





Guiding Principles Programs and Activities

- It should be a safe haven
- Include outdoor interaction
- Include cultural design elements throughout
- Welcoming to family members
- Provide choice, options for living style
- Space for kids, reunification activities
- Social kitchen
- Place for social gathering, cultural activities
- Places for art for those still incarcerated
- Places for quiet / reflection



Guiding Principles Home Essence

- Space should be flexible / accommodating
- Used to having a decent amount of support
- Should promote coming together as a community, help the healing process
- Option for transition space, transitioning out of a group setting
- Dorm style >>> efficiency apt >>> apartment >>> transition out
- Women have a lot of strength / power
- Some words we heard were: “PEACE”, “COMFY”, “FRIENDS”, “HEART”, “FAMILY”, “ACCEPTANCE”, “SAFE”, “COMMUNITY”



Guiding Principles Sustainability / Subsistence

- Would like to have a building that respects Mother Earth
- Solar panels
- Design should follow sustainable design practices
- The project should also incorporate teaching elements to showcase the sustainable systems incorporated into the project
- The project should also incorporate the concept of subsistence by uniting culture and sustainable design, as Indigenous peoples core ethos align with Treading Lightly on Mother Earth



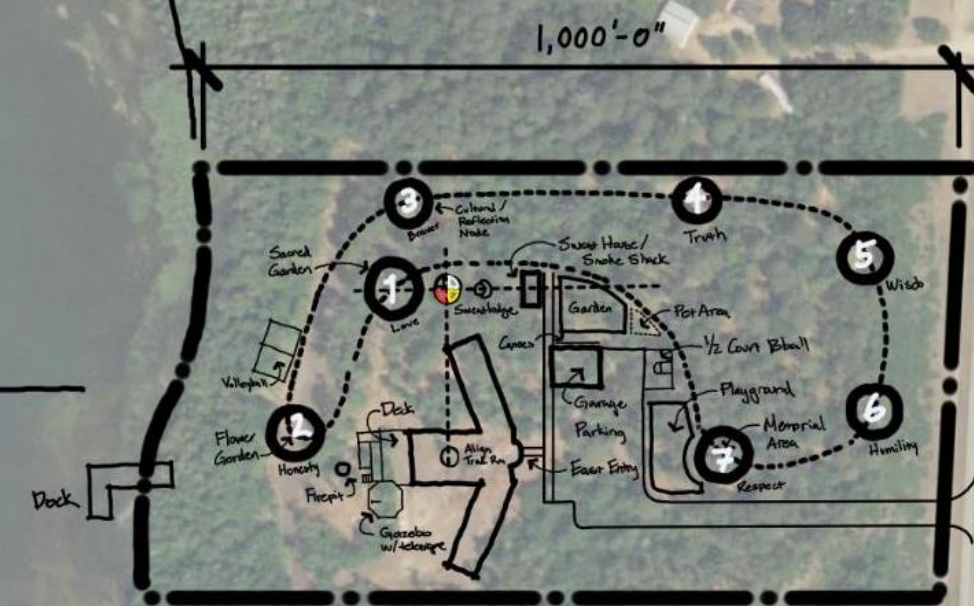
Guiding Principles - Culture

- Would like to incorporate the Seven Teachings into the design
- East Entry
- Traditional room for ceremony/smudging
- Multi-lingual signage
- Sweat lodge on site
- Sacred garden with sage, sweetgrass, tobacco, and cedar
- Include a walking path that highlights traditional plants with signage (name, usage, etc.)



Results

Lake
gichigami



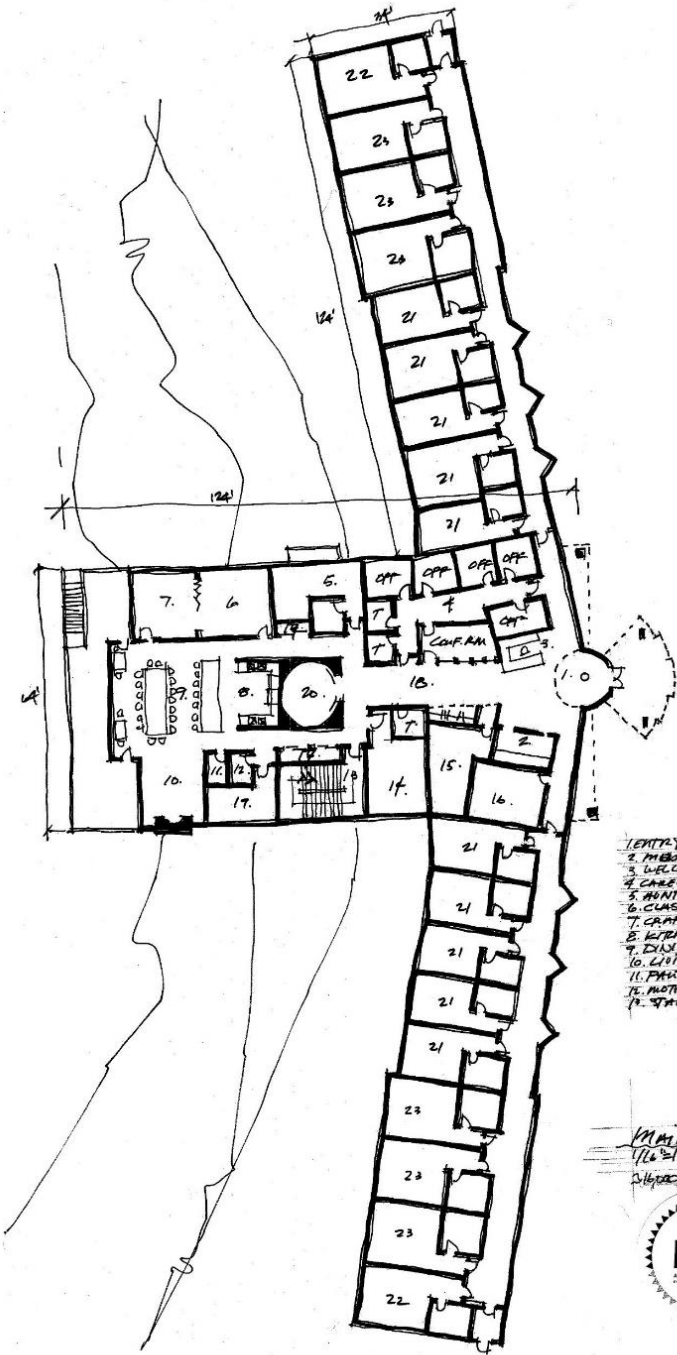
road access
miikana

500,000 sf site
(11.47 acres)

Bemidji
Bemijigamaag

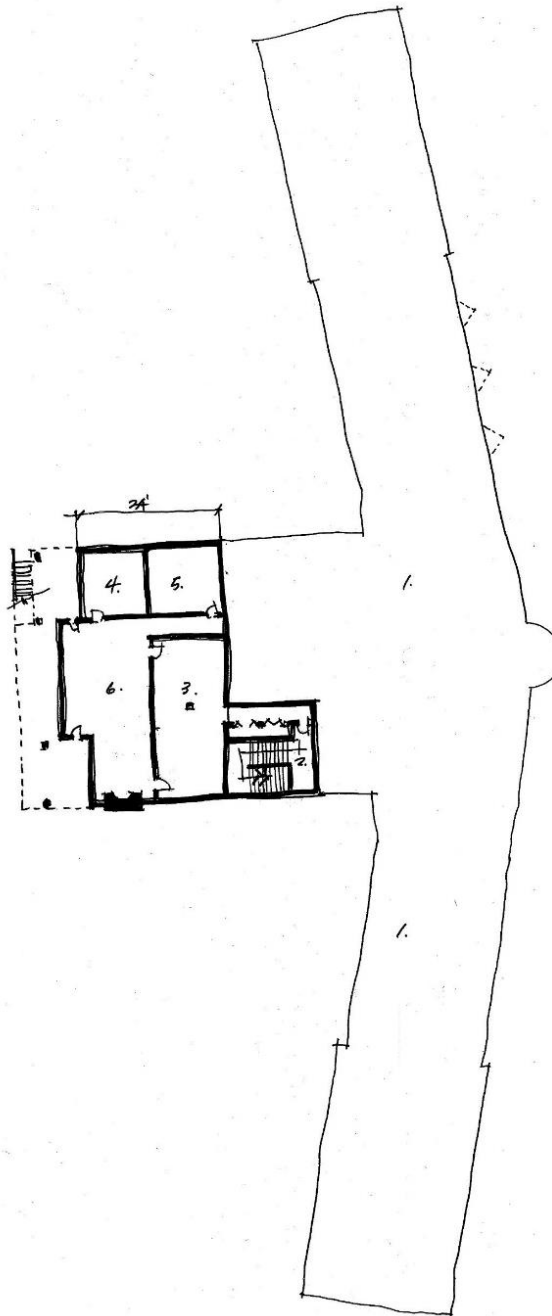
Hwy 2 Cass Lake
Gaa-miskwaakwaa'kokaag

Healing House
noojimo'iwewin endaaayan



- | | |
|------------------|-----------------------|
| 1. ENTRY | 14. STUDY - LIBRARY |
| 2. PREG ROOM | 15. LAUNDRY |
| 3. WELCOME | 16. PLAY ROOM |
| 4. CAREGIVERS | 17. DISPLAY |
| 5. ANITTE | 18. GALLERY |
| 6. CLASS ROOM | 19. REFLECTION |
| 7. CRAFT ROOM | 20. TRANSITIONAL COR. |
| 8. KITCHEN | |
| 9. DINING | |
| 10. LIVING ROOM | |
| 11. PORCH | |
| 12. MOTHERS ROOM | |
| 13. STAIRS | |
| | LOBBY: |
| | 21. SINGLE (10) |
| | 22. DOUBLE (6) |
| | 23. FAMILY (6) |

MAIN LEVEL - Heming House
 116' x 10'
 4-6-22
 21' x 10' + 16' x 10' + 10' x 10'



- | |
|---------------------------|
| 1. UNDEVELOPED - |
| 2. SLAB ON GRADE |
| 3. STAIRS |
| 4. MECH. ROOM |
| 5. I.T. / ELEC. |
| 6. FUTURE RECREATION ROOM |

LOWER LEVEL - Heming House
 116' x 10'
 4-6-22
 20' x 10' + 16' x 10' + 10' x 10'





Think Seven!

ENVISION WITH BRAVERY
PLAN WITH LOVE
DESIGN WITH WISDOM
EVALUATE WITH HONESTY
DETAIL WITH RESPECT
BUILD THE MOMENT OF TRUTH
CELEBRATE WITH HUMILITY

Miigwetch!

**"WE WANT OUR BUILDINGS TO BECOME
ELDERS AND CREATE AN ENVIRONMENT OF
SUBSISTENCE WHICH WILL HELP SUSTAIN
TRIBAL CULTURE." - MIKE LAVERDURE**

